

**MANITOU** M30/M50

MASTED FORKLIFT TRUCKS

**alfasi hire**



**alfasi hire**

1300 55 1108  
[www.alfasihire.com.au](http://www.alfasihire.com.au)



**M 30**

2-wheel or  
4-wheel  
drive



**M 50**

2-wheel or  
4-wheel  
drive





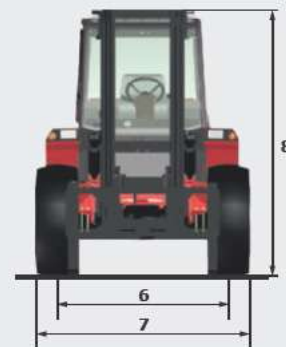
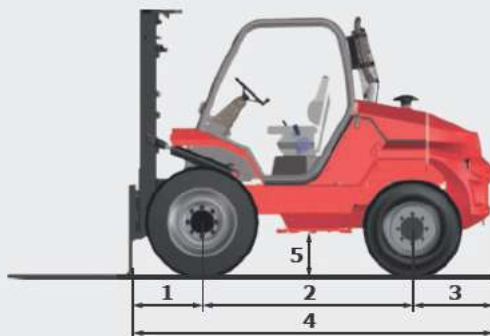
# MASTS

	Forklift type	Mast (m)	Free lift (mm)	Height of mast fully retracted (mm)	Height of mast extended (mm)	Height with Max Capacity. (m)		Capacity at Max. Height (kg)	
						Including sideshift	Not including sideshift	Including sideshift	Not including sideshift
Full visibility duplex	M 30	3.00	130	2305	4045	3.00	3.00	3000	3000
	M 50		-	2560	4115			4700	5000
	M 30	3.30	130	2455	4345	3.30	3.30	3000	3000
	M 50		-	2710	4415			4700	5000
	M 30	3.50	130	2555	4545	3.50	3.50	3000	3000
	M 50		-	2810	4615			4700	5000
	M 30	3.70	130	2715	4745	3.70	3.70	3000	3000
	M 50		-	2910	4815			4700	5000
	M 30	4.00	130	2905	5045	4.00	4.00	3000	3000
	M 50		-	3060	5115			4700	5000
	M 30	4.50	130	3155	5545	4.00	4.00	2800	2900
	M 50		-	3305	5615			4050	4500
	M 30	5.00	130	3405	6045	4.00	4.00	2400	2600
	M 50		-	3560	6115			3600	4000
Free lift duplex	M 30	3.00	1383	2305	3962	3.00	3.00	3000	3000
	M 50		1528	2585	4117			4700	5000
	M 30	3.30	1533	2455	4262	3.30	3.30	3000	3000
	M 50		1678	2735	4417			4700	5000
	M 30	3.50	1633	2555	4462	3.50	3.50	3000	3000
	M 50		1778	2835	4617			4700	5000
	M 30	3.70	1793	2715	4662	3.70	3.70	3000	3000
	M 50		1878	2935	4817			4700	5000
	M 30	4.00	1983	2905	4962	4.00	4.00	3000	3000
	M 50		1978	3085	5517			4700	5000
Full visibility triplex	M 30	5.50	-	3055	6725	4.00	4.00	1500	2000
Free lift triplex	M 30	3.70	1283	2205	4662	3.70	3.70	3000	3000
	M 50		1265	2310	4805			4700	5000
	M 30	4.00	1383	2305	4962	4.00	4.00	3000	3000
	M 50		1365	2410	5105			4700	4700
	M 30	4.30	1533	2455	5262	4.00	4.30	2900	3000
	M 50		1465	2510	5404		4.00	4050	4500
	M 50	4.50	1540	2585	5605	4.00	4.00	3600	4000
	M 30	4.70	1633	2555	5662	4.00	4.00	2600	2700
	M 50		1600	2645	5805			3350	3700
	M 30	5.00	1793	2715	5962	4.00	4.00	2400	2600
	M 50		1715	2760	6105			3000	3300
	M 30	5.50	1983	2905	6462	4.00	4.00	1500	2000
	M 50		1865	2910	6601			2150	2400
	M 30	6.00	2233	3155	6962	4.00	4.00	1600	1800
	M 50		2040	3085	7105			1800	2000
	M 30	6.50	2483	3405	7462	4.00	4.00	1200	1350
M 30	7.00	2733	3655	7962	4.00	4.00	900	1000	



# M30-2 / M30-4 / M50-2 / M50-4

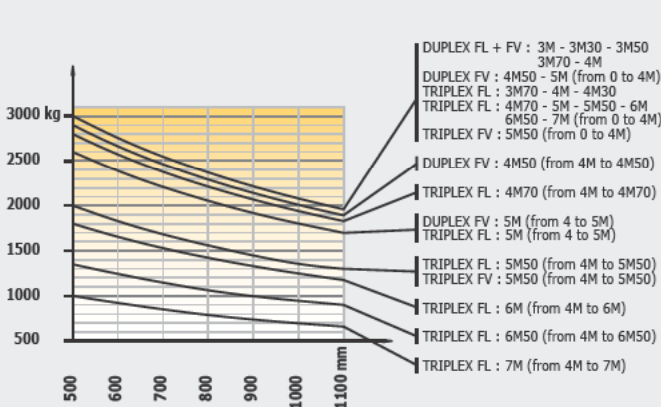
	M30-2	M30-4	M50-2	M50-4
<b>Lifting</b>				
Max. capacity	3000 kg at 500 mm CDG		5000 kg at 600 mm CDG	
Lifting height (standard mast)			3.70 m	
Max. lifting height	7.00 m		6.00 m	
<b>Unladen time</b>				
Lifting	0.5 m/s		0.5 m/s	0.4 m/s
Lowering	0.5 m/s		0.4 m/s	0.3 m/s
<b>Tyres</b>				
Forward	14.5 R20 18PR MPT80 TL	400/70-20 150B T37 STAB TL	18-19.5 18PR 166A6 TL	18-22.5 163A8 MPT-06 TL
Backward	10R 17.5 134/132 M G291	10.5/80-18 10PR TG42 TL	10 R 17.5 134/132M G291	340/80 R18 XMCL 143A8
<b>Braking</b>				
Service brake	oil immersed multi-disc braking on front/rear axles			
Parking brake	oil immersed multi-disc mechanics on the front axle			
<b>Engine</b>				
Type	PERKINS - STAGE 3B			
Cubic capacity	PERKINS 854F-E34T			
Power	3400 cm <sup>3</sup>			
Max. torque	75 HP / 55.5 kW			
Injection	318 Nm at 1400 rpm			
Cooling	direct			
Laden drawbar pull	4670 daN	6290 daN	6090 daN	10220 daN
<b>Transmission</b>				
Gearbox	torque converter			
Reversing shift	mechanical			
Number of gears (forward/reverse)	electro-hydraulic			
Max. travel speed	22 km/h		24 km/h	
(may vary according to applicable regulations)				
Front axle differential lock	yes	no	yes	no
Control for 2/4 wheel drive	no	yes	no	yes
<b>Controls</b>				
hydro-proportional levers for all movements				
<b>Hydraulics</b>				
Pump	gear pump 97 l/min - 245 bar		gear pump 97 l/min - 230 bar	
<b>Capacities</b>				
Hydraulic oil	80 l			
Fuel	85 l			
<b>Unladen weight (with standard mast forks)</b>				
	5290 kg	5485 kg	7920 kg	8190 kg
<b>Dimensions</b>				
1. Front wheel centre to carriage	0.70 m		0.77 m	0.76 m
2. Wheelbase	1.99 m		2.06 m	2.12 m
3. Rear wheel centre to rear face	0.76 m		0.92 m	0.86 m
4. Overall length to carriage	3.44 m		3.75 m	3.74 m
5. Ground clearance	0.37 m	0.38 m	0.36 m	0.43 m
6. Inside tyre width	1.55 m	1.52 m	1.60 m	1.62 m
7. Overall width	1.90 m	1.92 m	2.05 m	2.08 m
8. Overall height	2.45 m		2.42 m	2.43 m
Standard forks (length x width x thickness)	1200 x 125 x 40 mm		1200 x 150 x 60 mm	
Turning radius	3.10 m	4.27 m	3.40 m	4.57 m
Tilt standard mast (forward/backward)	6° / 12°		15° / 15°	
<b>Noise and vibration</b>				
Noise at driving position (LpA)	76 dB			
Environmental noise (LwA)	104 dB			
Vibration to whole hand/arm	<2.5 m/s <sup>2</sup>			



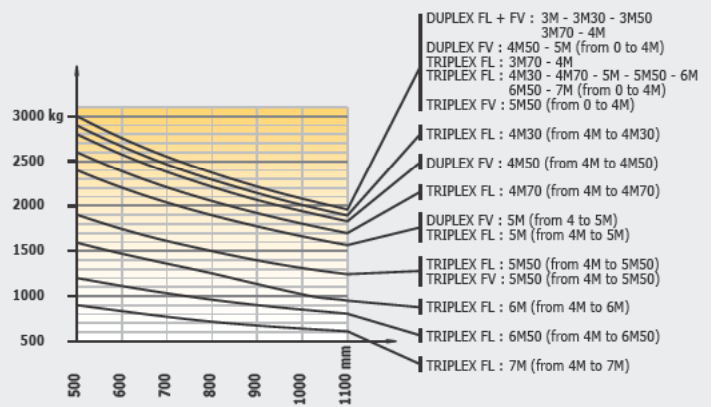
# Charts

## M 30

**Without sideshift attachment**

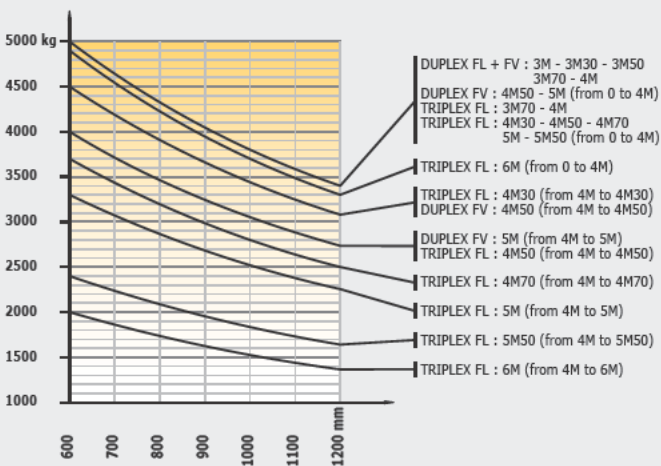


**With sideshift attachment**

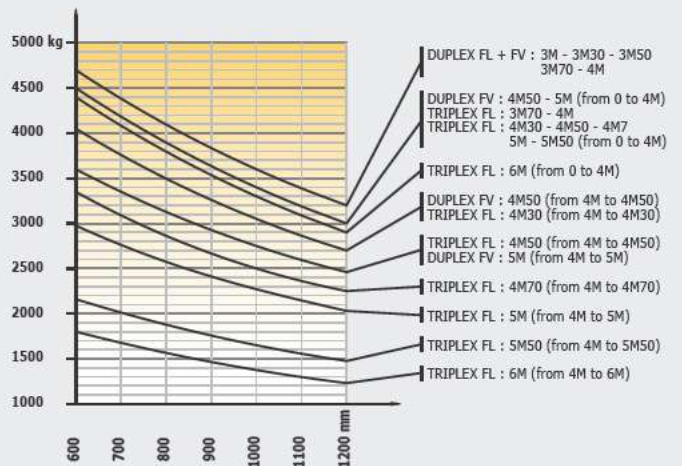


## M 50

**Without sideshift attachment**



**With sideshift attachment**



FV = Full Visibility  
 FL = Free Lift  
 TDL = Sideshift attachment