



**Best lifting performance**

- High Performance lifting capacity
- High maximum reach capacity

**Best Precision and user confort**

- Full hydrostatic transmission for more confort and productivity
- Smooth boom design with everything inside for best side visibility
- Dangerous movements cut out switch

**Compact and Strong**

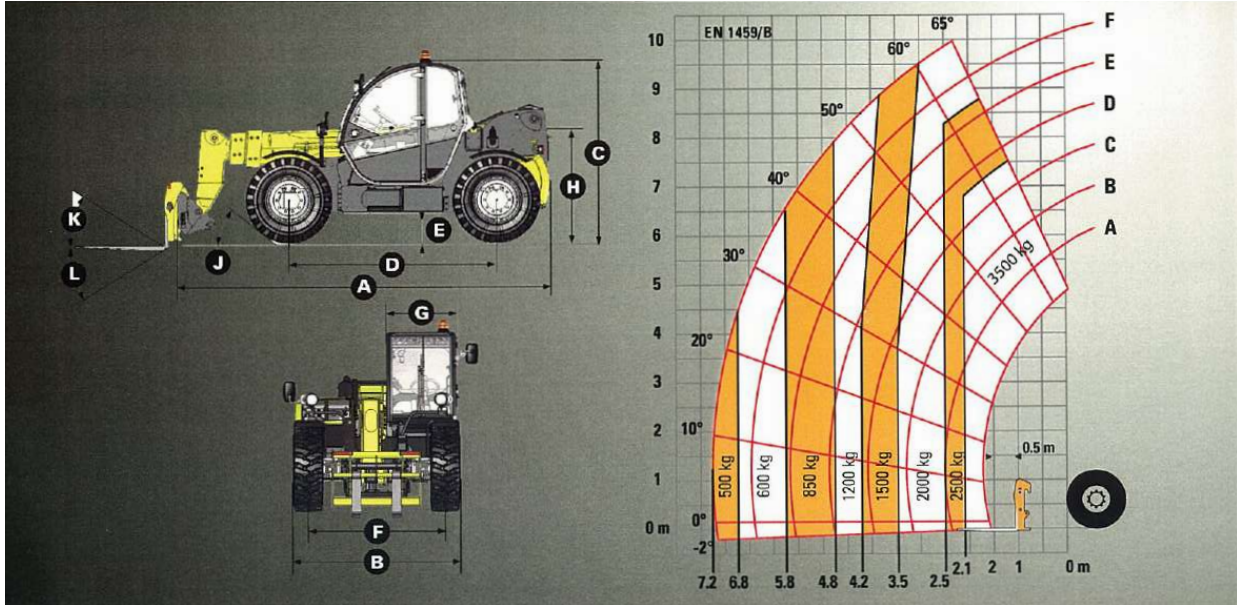
- 5 m Length
- Tilt corrector as standard



Placing height :  
9,8 m



Maximum lift capacity :  
3500 kg



**PERFORMANCES**

Maximum lift capacity	3500 kg
Lift capacity to full height	2000 kg
Lift capacity at full reach	500 kg
Maximum fork height	9.8 m
Reach at maximum fork height	2.2 m
Maximum forward reach	7.2 m

**DIMENSIONS**

A - Length	4.96 m
B - Width	2.26 m
C - Height	2.42 m
D - Wheelbase	2.78 m
E - Ground clearance	42 cm
F - Track width	1.88 m
G - Cab width	0.96 m
H - Height to high boom pivot	1.6 m
J - Approach angle	30 °
K - Upper rotation of forks	18 °
L - Lower rotation of forks	104 °
Turning radius (outside wheels)	3.7 m
Weight with forks	8500 kg
Tyres type	405/70 - 24

**ENGINE**

Engine model	Perkins 1104
Engine Capacity	4400 cm <sup>3</sup>
Engine power output	70 kW / 95 CV
Engine torque	392 Nm
Transmission type	Hydrostatic
Fuel tank	120 l
Engine oil	103 l

**STANDARD EQUIPMENT**

- Heavy duty Hydrostatic transmission with variable capacity pump and engine
- 4 wheel drive and steer
- Fuel filter with water separator
- Gear equipment pump
- Electrically hydraulic controls
- Proportional controls for movement of boom/telescopic arm/excavation and accessories
- Safety valves on hydraulic jacks
- Auxilliary hydraulic ports
- Overload/dangerous movements cut out switch
- Tilt corrector: +/- 10 °
- ROPS/FOPS cabin with heating and ventilation

**OPTIONS AND ACCESSORIES**

- Cold environment kit
- Biodegradable oil
- Cold environment oil
- Hot environment oil
- Air conditioning
- Working lights
- 4-in-1 bucket and standards
- Jib attachment and winch

Placing height : 9,8 m  
Maximum lift capacity : 3500 kg