

**MERLO**  
AUSTRALIA

**P60.10**

TELEHANDLER

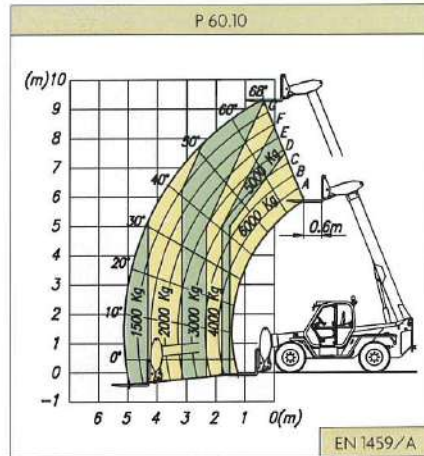
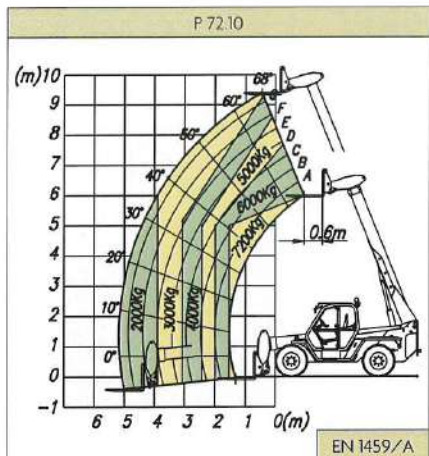
**alfasi hire**



**alfasi hire**

**1300 55 1108**

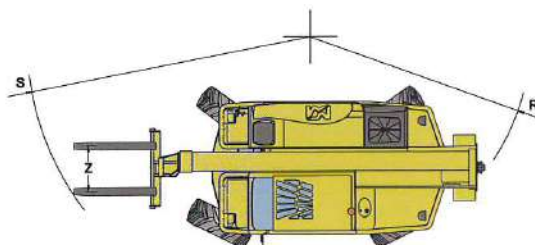
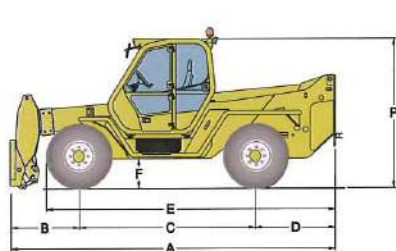
**[www.alfasihire.com.au](http://www.alfasihire.com.au)**



PANORAMIC		P 72.10	P 60.10
<b>Weight</b>			
Total empty weight (with forks)	kg	10500	9890
<b>Performance</b>			
Rated maximum load	kg	7200	6000
Maximum lift height	m	9.55	9.55
Maximum forward reach	m	5.5	5.5
Lift height at full capacity	m	6	7.8
Reach at full capacity	m	1.6	1.6
Capacity at full lift height	kg	4000	4000
Capacity at full forward reach	kg	2000	1500
Low emission (Euro 2) engine		turbo	
Power at 2400rpm (97/68/CE)	kW/HP	74.5/101	
<b>Speed ratios</b>			
1 <sup>st</sup> gear	kph	16	16
2 <sup>nd</sup> gear (self-limiting maximum speed)	kph	40	40

PANORAMIC		P 72.10	P 60.10
<b>Dimensions</b>			
A	mm	5345	5345
B	mm	1235	1235
C	mm	2875	2875
D	mm	1300	1300
E	mm	4645	4645
F	mm	480	480
H	mm	2240	2240
M	mm	995 <sup>1)</sup>	995 <sup>1)</sup>
P	mm	2440	2440
R	mm	3950	3950
S	mm	4970	4970
Z	mm	850	850

<sup>1)</sup> Useful internal width



The side mounted engine ensures excellent accessibility for maintenance. Technicians can work in total safety with their feet firmly on the ground.



A comprehensive instrument panel can be read in all lighting conditions.



The optional air suspended seat ensures excellent comfort.

