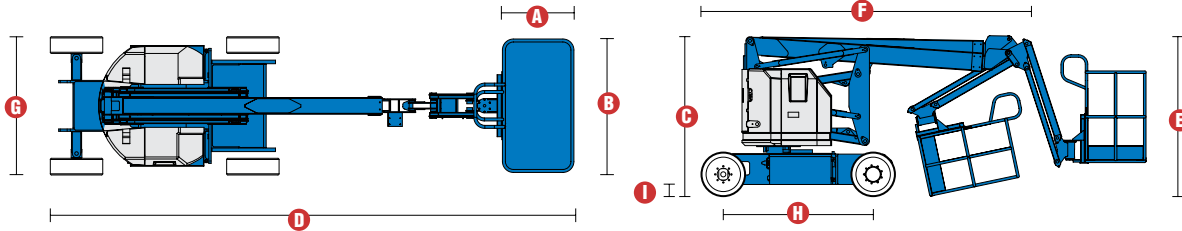


Specifications



MODEL	Z™-34/22N	
MEASUREMENTS	Metric	US
Working height maximum*	12.52m	40ft 6in
Platform height maximum	10.52m	34ft 6in
Horizontal reach maximum	6.78m	22ft 3in
Up and over clearance maximum	4.62m	15ft 2in
A Platform length	0.76m	2ft 6in
B Platform width	1.42m	4ft 8in
C Height - stowed	2.00m	6ft 7in
D Length - stowed	5.72m	18ft 9in
E Storage height	2.26m	7ft 5in
F Storage length	4.19m	13ft 9in
G Width	1.47m	4ft 10in
H Wheelbase	1.88m	6ft 2in
I Ground clearance - centre	0.14m	5.5in

PRODUCTIVITY		
Lift capacity	227kg	500lbs
Platform rotation	180°	180°
Vertical jib rotation	139°	139°
Turntable rotation	355° non-continuous	
Turntable tailswing	zero	zero
Drive speed - stowed	6.4 km/h	4.0 mph
Drive speed - raised**	1.1 km/h	0.68 mph
Gradeability - stowed***	35%	35%
Turning radius - inside	2.13m	7ft
Turning radius - outside	4.08m	13ft 5in
Controls	24V DC proportional	
Tyres - solid non-marking	56x18x45 cm	22x7 x 17.75in

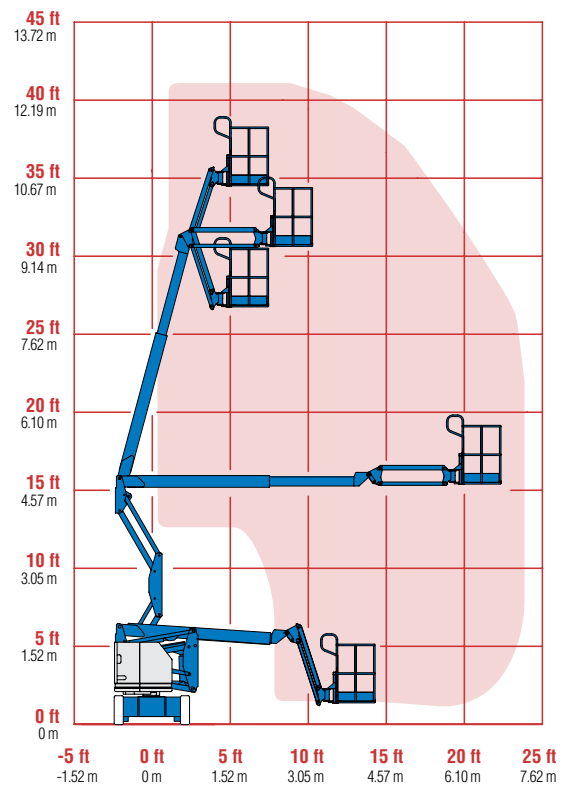
POWER		
Power source	48V DC (eight 6V batteries 315 Ah capacity)	
Auxiliary power unit	24V DC	24V DC
Hydraulic tank capacity	15.1 L	4 gal

WEIGHT****		
	5,216kg	11,499lbs

STANDARDS COMPLIANCE ANSI A92.5, CSA B354.4, CE Compliance, AS 1418.10

* The metric equivalent of working height adds 2 m to platform height. U.S. adds 6 ft to platform height.
 ** In lift mode (platform raised), the machine is designed to operate on firm, level surfaces only.
 *** Gradeability applies to driving on slopes. See operator's manual for details regarding slope ratings.
 **** Weight will vary depending on options and/or country standards.

RANGE OF MOTION Z™-34/22N



Features

STANDARD FEATURES

MEASUREMENTS

- 12.52 m (40 ft 6 in) working height
- 6.78 m (22 ft 3 in) horizontal reach
- 4.62 m (15 ft 2 in) up and over clearance
- Up to 227 kg (500 lbs) lift capacity

PRODUCTIVITY

- 1.42 m (4 ft 8 in) steel platform
- 2WD
- Solid rubber non-marking tyres
- 1.22 m (4 ft) jib boom with 139° working range
- Self-leveling platform
- Hydraulic platform rotation
- Fully proportional controls
- Thumb rocker steer
- Drive enable
- Horn
- Hour meter
- Tilt alarm
- Alarm package
- 355° non-continuous turntable rotation
- Zero tailswing and front arm swing
- Sep-Ex drive system
- Dual flashing beacons

POWER

- 48 V deep cycle battery pack
- 24 V DC auxiliary power
- Universal 30A battery smart charger

**Reduces platform load capacity to 440 lbs

OPTIONS & ACCESSORIES

PRODUCTIVITY

- Platform swing gate
- Half-mesh platform inserts with swing gate
- Air line to platform
- Hostile environment kit
- Fire resistant hydraulic oil
- Biodegradable hydraulic oil
- Tool tray
- Fluorescent tube caddy
- Platform work lights
- Lockable platform control box cover
- Front driving lights

POWER OPTIONS

- 240 V power to platform
- Battery charge indicator (BCI)
- Low voltage interrupt with BCI
- Retained key selector switch

