



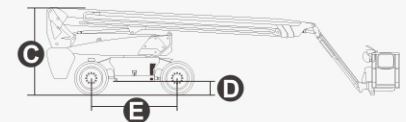
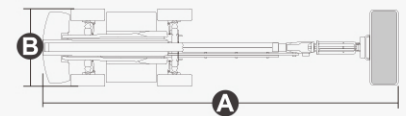
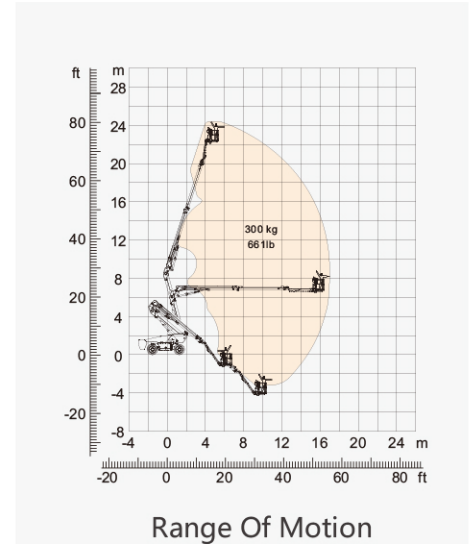
## SPECIFICATIONS

Size	Metric	British
Max. Working Height	24.3m	79ft 9in
Max. Platform Height	22.3m	73ft 2in
Max. Operating Range(+0.6m)	17.1m	56ft 1in
Max. Platform Range	16.5m	54ft 2in
Overall Length(Stowed) <b>A</b>	9.83m	32ft 3in
Overall Length(Transport)	10.03m	32ft 11in
Overall Width(Stowed) <b>B</b>	2.5m	8ft 2in
Overall Width(Transport)	2.28m	7ft 6in
Overall Height(Stowed) <b>C</b>	2.89m	9ft 6in
Overall Height(Transport)	2.61m	8ft 7in
Platform Size(Length×Width)	2.44m×0.91m	8ft×3ft
Turntable Tailswing	1.61m	5ft 3in
Ground Clearance <b>D</b>	0.41m	1ft 4in
Wheelbase <b>E</b>	2.8m	9ft 2in
Turning Radius(Inside/Outside)	1.87m/3.22m	6ft 2in/10ft 7in
Tyres	385/45-28	385/45-28
Up And Over Clearance	9.14m	29ft 12in
Max. Down Probing Depth	4.03m	13ft 2.7in

Performance		
S.W.L	300kg	661lb
Max. Occupants	2	2
Gradeability	30%	30%
Travel Speed(Stowed)	6km/h	6km/h
Travel Speed(Raised)	1.1km/h	1.1km/h
Max. Working Slope	X-5°/Y-5°	X-5°/Y-5°
Turret Rotation	360°Continuous	360°Continuous
Platform Rotation	180°	180°
Jib Movement	135°	135°

Weight		
Overall Weight	17200kg	37919lb

Power		
Lithium Battery	420Ah/80V	420Ah/80V
Charger	90-264VAC 6.6kW	90-264VAC 6.6kW
Driving Motor	18kW 3243rpm	18kW 3243rpm
Lifting Motor	24kW 2150rpm	24kW 2150rpm
Hydraulic Tank	165L	36gal





## FEATURES

### Standard Items

- 2.31m (7ft 7in) jib boom
- Front Oscillating Axle
- Four-wheel Steering
- Four-wheel Drive
- Self-leveling Platform
- 180° Left And Right Swing Platform
- Proportional Joystick Controls
- Thumb Rocker Steer
- Drive Enable
- Ac Power Cord To Platform
- Tilt Alarm
- Descent Alarm
- Flash
- Horn
- Hour Meter
- Integral Integrated Special Drive Axle For Construction Machinery
- 360° Continuous Turntable Rotation
- Positive Traction Four Wheel Drive
- Platform Load Sense System
- Fault Diagnosis System
- Operator Anti-crushing Protection System
- Harsh Environment Kits (includes Cylinder Sleeves, Boom Dust Kits, Ground And Platform Control Box Covers)
- 12v Dc Auxiliary Power
- Lithium battery 420Ah/80V \*
- Driving Motor 18kW 3243rpm
- Lifting Motor 24kW 2150rpm

### Optional Items

#### Tire Options

- Rough Terrain Foam-filled \*\*
- Rough Terrain Non-marking Foam-filled

#### Hydraulic Oil Options

- Hydraulic Oil No. 46 (mineral Oil) \*\*

### Additional Items

- Hydraulic Generator
- Gps Module
- Biodegradable Hydraulic Oil
- Platform Top Auxiliary Rail
- Air Line To Platform
- Welding Wire To Platform
- Work Light Package
- Aircraft Protection Package
- Protective Cover For Ac Power Plug
- Main Telescopic Boom Oil Pipe Guard
- Anti-collision Bar Installed On Working Platform
- Working Platform Outer Anti-collision Bar
- Protective Net Installed Around Working Platform
- Head Anti-collision Device Installed On Working Platform
- Fast charging plug

**1300 551 108 | [efleet@alfasihire.com.au](mailto:efleet@alfasihire.com.au)**

**Carrum Downs (HQ)**  
(03) 8795 2999  
[vic@alfasi.com.au](mailto:vic@alfasi.com.au)

**Hunter Valley, NSW**  
(02) 9589 6200  
[hv@alfasi.com.au](mailto:hv@alfasi.com.au)

**Brisbane, QLD**  
(07) 3370 2800  
[qld@alfasi.com.au](mailto:qld@alfasi.com.au)

**Karratha, WA**  
(08) 6187 3000  
[wa@alfasi.com.au](mailto:wa@alfasi.com.au)

[alfasihire.com.au](http://alfasihire.com.au)

**Derrimut, VIC**  
(03) 8795 2999  
[vic@alfasi.com.au](mailto:vic@alfasi.com.au)

**Sydney, NSW**  
(02) 9589 6200  
[nsw@alfasi.com.au](mailto:nsw@alfasi.com.au)

**Mackay, QLD**  
(07) 3370 2800  
[qld@alfasi.com.au](mailto:qld@alfasi.com.au)

**alfasi group**  
hire & property