



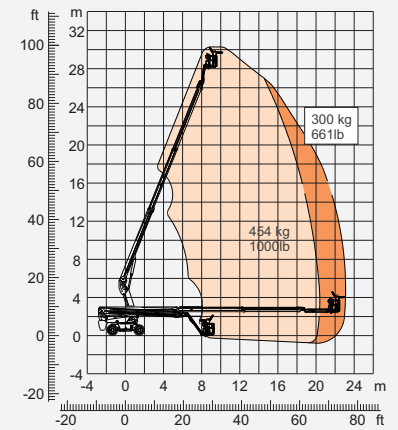
## SPECIFICATIONS

Size	Metric	British
Max. Working Height	30.2m	99ft 5in
Max. Platform Height	28.2m	92ft 1in
Max. Operating Range(+0.6m)	23m	75ft 6in
Max. Platform Range	22.4m	73ft 6in
Overall Length(Stowed) <b>A</b>	12.30m	40ft 2in
Overall Length(Transport)	12.00m	39ft 3in
Overall Width(Stowed) <b>B</b>	2.5m	8ft 2in
Overall Width(Transport)	2.28m	7ft 6in
Overall Height(Stowed) <b>C</b>	2.87m	9ft 5in
Overall Height(Transport)	2.59m	8ft 6in
Platform Size(Length×Width)	2.44m×0.91m	8ft×3ft
Turntable Tailswing	1.61m	5ft 3in
Ground Clearance <b>D</b>	0.41m	1ft 4in
Wheelbase <b>E</b>	2.8m	9ft 2in
Turning Radius(Inside/Outside)	1.87m/3.22m	6ft 2in/10ft 7in
Tyres	385/45-28	385/45-28

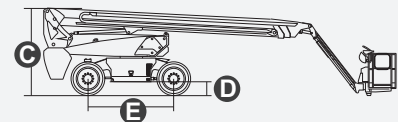
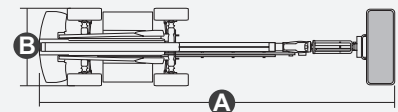
Performance		
S.W.L(Unrestricted/Restricted)	300kg/454kg	661lb/1000lb
Max. Occupants	3	3
Gradeability	30%	30%
Travel Speed(Stowed)	6km/h	6km/h
Travel Speed(Raised)	1.1km/h	1.1km/h
Max. Working Slope	X-5°/Y-5°	X-5°/Y-5°
Turret Rotation	360°Continuous	360°Continuous
Platform Rotation	180°	180°
Jib Movement	135°	130°

Weight		
Overall Weight	18900kg	41667lb

Power		
Lithium Battery	520Ah/80V	520Ah/80V
Charger	90-264VAC 6.6kW	90-264VAC 6.6kW
Driving Motor	18kW 3243rpm	18kW 3243rpm
Lifting Motor	24kW 2150rpm	24kW 2150rpm
Hydraulic Tank	165L	36gal



Range Of Motion





## FEATURES

### Standard Items

- 2.31m (7ft 7in) Jib Boom
- Front Oscillating Axle
- Four-Wheel Steering
- Four-Wheel Drive
- Self-Leveling Platform
- 180° Left And Right Swing Platform
- Proportional Joystick Controls
- Thumb Rocker Steer
- Drive Enable
- Ac Power Cord To Platform
- Tilt Alarm
- Descent Alarm
- Flash
- Horn
- Hour Meter
- Integral Integrated Special Drive Axle For Construction Machinery
- 360° Continuous Turntable Rotation
- Positive Traction Four Wheel Drive
- Platform Load Sense System
- Fault Diagnosis System
- Operator Anti-crushing Protection System
- Harsh Environment Kits (includes Cylinder Sleeves, Boom Dust Kits, Ground And Platform Control Box Covers)
- 12V DC Auxiliary Power
- Lithium battery 520Ah/80V \*
- Driving Motor18kW 3243rpm
- Lifting Motor24kW 2150rpm

**1300 551 108 | [efleet@alfasihire.com.au](mailto:efleet@alfasihire.com.au)**

**Carrum Downs (HQ)**  
(03) 8795 2999  
[vic@alfasi.com.au](mailto:vic@alfasi.com.au)

**Hunter Valley, NSW**  
(02) 9589 6200  
[hv@alfasi.com.au](mailto:hv@alfasi.com.au)

**Brisbane, QLD**  
(07) 3370 2800  
[qld@alfasi.com.au](mailto:qld@alfasi.com.au)

**Karratha, WA**  
(08) 6187 3000  
[wa@alfasi.com.au](mailto:wa@alfasi.com.au)

[alfasihire.com.au](http://alfasihire.com.au)

**Derrimut, VIC**  
(03) 8795 2999  
[vic@alfasi.com.au](mailto:vic@alfasi.com.au)

**Sydney, NSW**  
(02) 9589 6200  
[nsw@alfasi.com.au](mailto:nsw@alfasi.com.au)

**Mackay, QLD**  
(07) 3370 2800  
[qld@alfasi.com.au](mailto:qld@alfasi.com.au)

**alfasi group**  
hire & property