



### **Performance and productivity**

- Best load capacities
- Rear axle lock and tilt corrector in standard
- Flow Sharing in standard enabling a simultaneous and proportional control of 4 movements

### **Powerful and robust**

- High strength monoblock chassis
- Rough terrain capacities
- Hydrostatic transmission and inching pedal

### **Comfort and ergonomoy**

- Driving position reducing fatigue at work
- LMI easy to read including automatic cut off dangerous movements
- Smart control 4 in 1 Joystick
- High safety cab

Placing height : 13.6 m

Maximum lift capacity :  
4000 kg

Placing height : 13.6 m  
Maximum lift capacity : 4000 kg

 **PERFORMANCES**

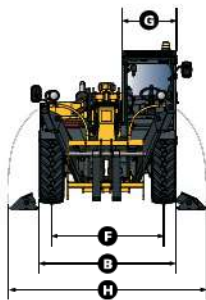
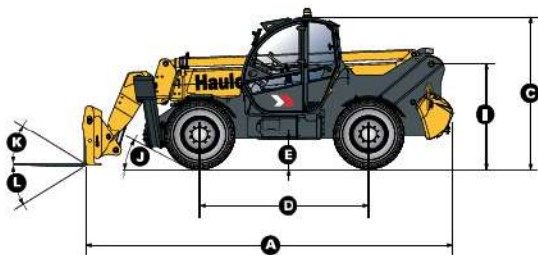
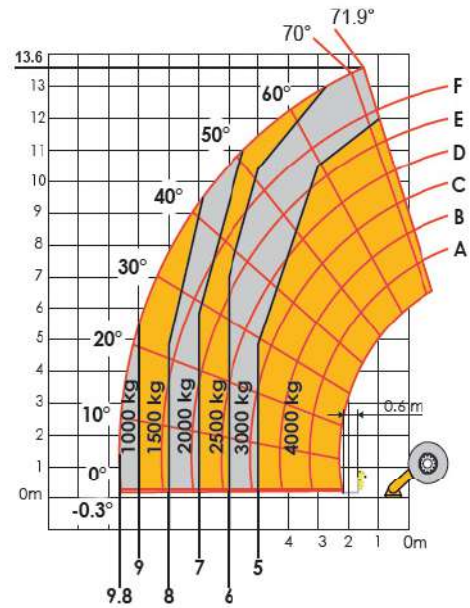
Maximum lift capacity	4000 kg
Lift capacity to full height	3000 kg
Lift capacity at full reach	1000 kg
Maximum fork height	13.6 m
Reach at maximum fork height	1.5 m
Maximum forward reach	9.8 m

 **DIMENSIONS**

<b>A</b> Length	6.46 m
<b>B</b> Width	2.43 m
<b>C</b> Height	2.6 m
<b>D</b> Wheelbase	2.89 m
<b>E</b> Ground clearance	50 cm
<b>F</b> Track width	1.93 m
<b>G</b> Cab width	0.96 m
<b>H</b> Overall width - stabilizers down	3.34 m
<b>I</b> Height to high boom pivot	1.75 m
<b>J</b> Approach angle	29°
<b>K</b> Upper rotation of forks	18°
<b>L</b> Lower rotation of forks	104°
Weight with forks	10850 kg
Tyres type	18 - 22,5 TMR4

 **ENGINE**

Engine model	PERKINS
Engine Capacity	4400 cm3
Engine power output	70 kW
Engine torque	392 Nm
Transmission type	Hydrostatic
Fuel tank	130 l
Engine oil	110 l



**STANDARD EQUIPMENT**

- Backlighted e-tronic dashboard
- Hydrostatic transmission
- 4 wheel drive and steer
- Fuel filter with water separator
- Simultaneous and proportional controls for boom/ telescopic arm / excavation and accessories movements
- Safety valves on hydraulic jacks
- Auxiliary hydraulic system in standard
- Cut-off of dangerous movements when overloaded
- Tilt corrector: ±10°
- ROPS/FOPS cabin with heating and ventilation
- Hydraulic rear axle locking

**OPTIONS AND ACCESSORIES**

- Winches
- Jibs
- Forks
- Buckets
- Cold Weather Package
- Biodegradable oil
- Cold environment oil
- Hot environment oil
- Air conditioning
- Working lights
- Metal windscreen protector (FOPS)
- Tools carriage with integrated hook